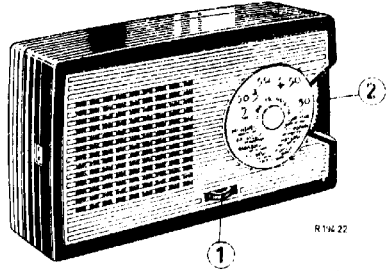


SERVICE NOTES

RADIO

6055T/00/01L



RTM 22

CONTROLS

BEDIENING

BEDIENUNG

COMMANDE

ORGANOS DE MANDO

Volume control + battery switch	1	Volumeregelaar + batt. schak.	Leutstärkereglér + Batt. Schalter	Rég. d'intensité + comm. de batterie	1	Rég. de volumen + Comm. de batería
Tuning	2	Afstemming	Abtimmung	Syntoniaison	2	Sintonía

SPECIFICATION

SPECIFICATIE

SPEZIFIKATION

SPECIFICATION

ESPECIFICACION

Loudspeaker	AD 2216 Z	Luidspreker	Leutsprecher	Haut-parleur	AD 2216 Z	Altavoz
I.F.	452 kc/s	M.F.	Z.F.	M.F.	452 kc/s	F.I.
Batteries	4,5 V	Batterijen	Batterien	Bateries	4,5 V	Batería
Consumption	6 - 10 mA	Verbruik	Verbrauch	Consumation	6 - 10 mA	Consumo
Dimensions	147,7x83,5x31	Afmetingen	Abmessungen	Dimensions	147,7x83,5x31	Dimensiones

WAVE RANGES - GOLFREBIJEN - WELLENBEREICHE - GAMMES D'ONDES -

MARGENES DE ONDAS

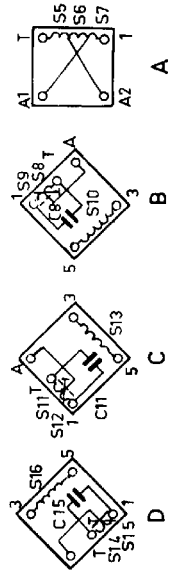
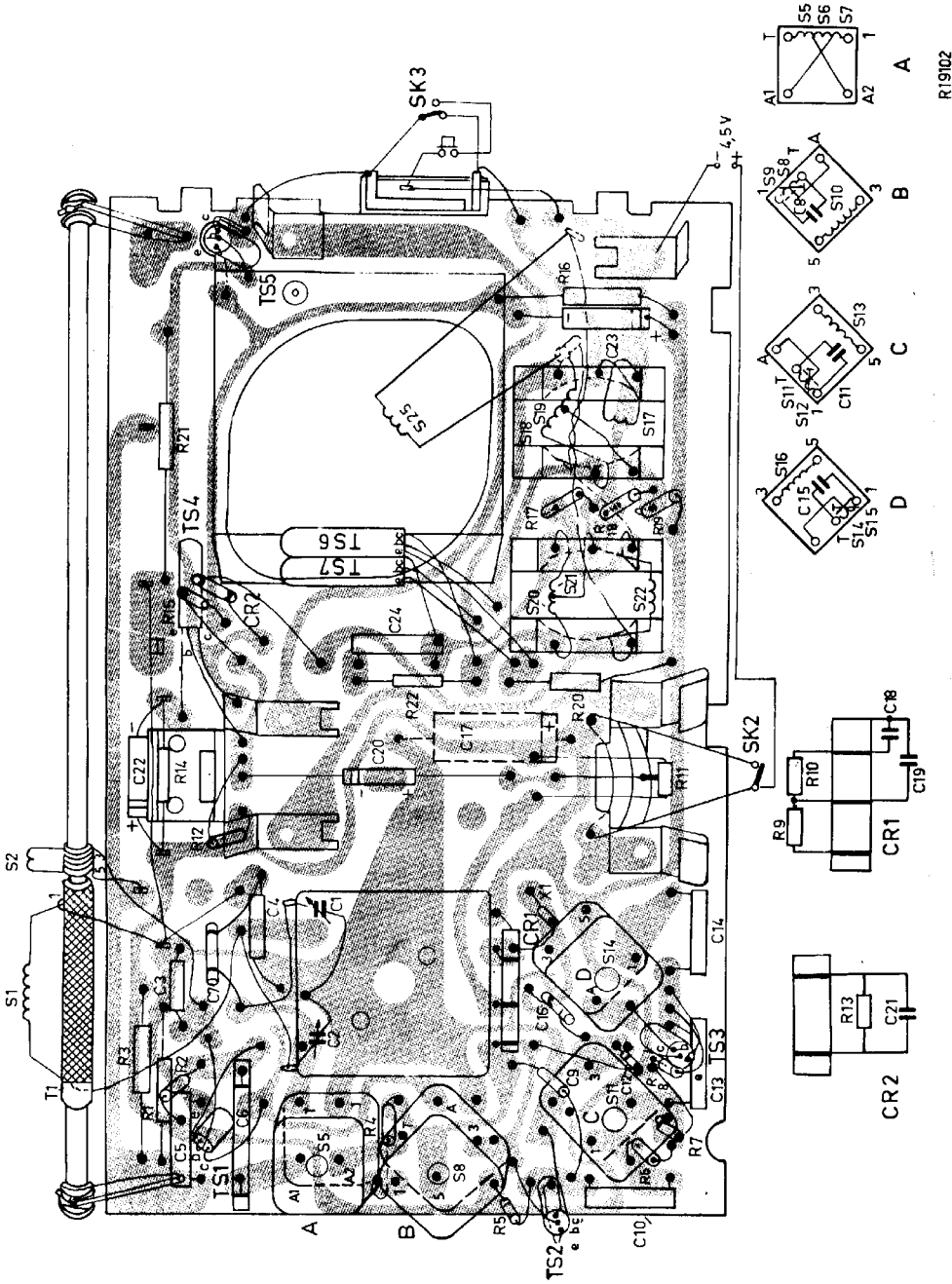
TRANSISTORS

M.W. - M.C. - M.F. - F.O. - O.M. : 185 - 570 m (1622 - 522 kc/s)

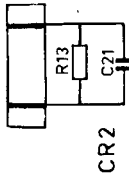
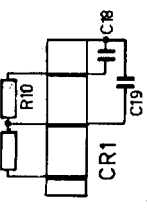
Ts1 : OC44 Ts4 : OC71 Ts6) 2 - OC72
 Ts2 : OC45 Ts5 : OC71 Ts7)
 Ts3 : OC45 X1 : OA85

SERVICE INFORMATION										
------------------------	--	--	--	--	--	--	--	--	--	--

Printed in Holland



R19102



CR2

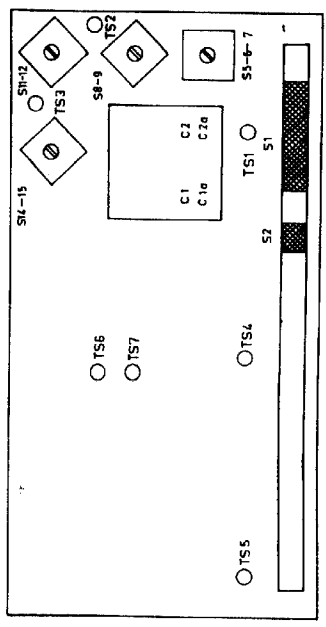
SA 6055T/00L/01L

To avoid complete stability in it of paramount importance to adjust the I.F. circuits exactly at the frequencies given in the following table. The stability is not to be taken for granted. It is recommended to use the following frequencies. The frequency of the oscillator should be checked with a frequency counter. The frequency of the oscillator should be checked with a frequency counter. The frequency of the oscillator should be checked with a frequency counter.

Wave range	Tuning capacitor	Signal	Adjust to max. output
MF	452 kc/s - 33,000 pF - 0-Ts1	Signal	Adjust to max. output
LF	450 kc/s - 33,000 pF - 0-Ts1	Signal	Adjust to max. output
HF	454 kc/s - 100 K. - 0-Ts1	Signal	Adjust to max. output
CF		Signal	Adjust to max. output

Wave range	Tuning capacitor	Signal	Adjust to max. output
MF	452 kc/s - 33,000 pF - 0-Ts1	Signal	Adjust to max. output
LF	450 kc/s - 33,000 pF - 0-Ts1	Signal	Adjust to max. output
HF	454 kc/s - 100 K. - 0-Ts1	Signal	Adjust to max. output
CF		Signal	Adjust to max. output

SA 6055T/00L/01L



Part Name	Part Number	Quantity	Notes
Cabinet (red)	A3 960 66	1	
Ornamental plate	A3 960 66	1	
Rear cover	A3 960 66	1	
Window in front of dial	A3 765 54	1	
Score	A3 503 62	1	
Cap over 1 battery	A3 503 62	1	
Cap over 2 batteries	A3 503 62	1	
Knob volume	A3 764 90	1	
Knob volume	A3 764 90	1	
Socket plate	A3 708 19	1	
Battery holder	A3 645 73	1	
Contact spring 3x	A3 645 73	1	
Contact spring 2x	A3 645 73	1	
Spring	A3 293 12	1	
Strip	A3 293 14	1	
Bracket	A3 990 79	1	
Slide contact	A3 990 79	1	
Dial	928/6055T	1	